

4

3

2

1

ITEM NO.	DESCRIPTION	QTY.
1	BASE	1
2	JAW	1
3	1/2 X 1 UNC FLAT HEAD CAP SCREW	1

D

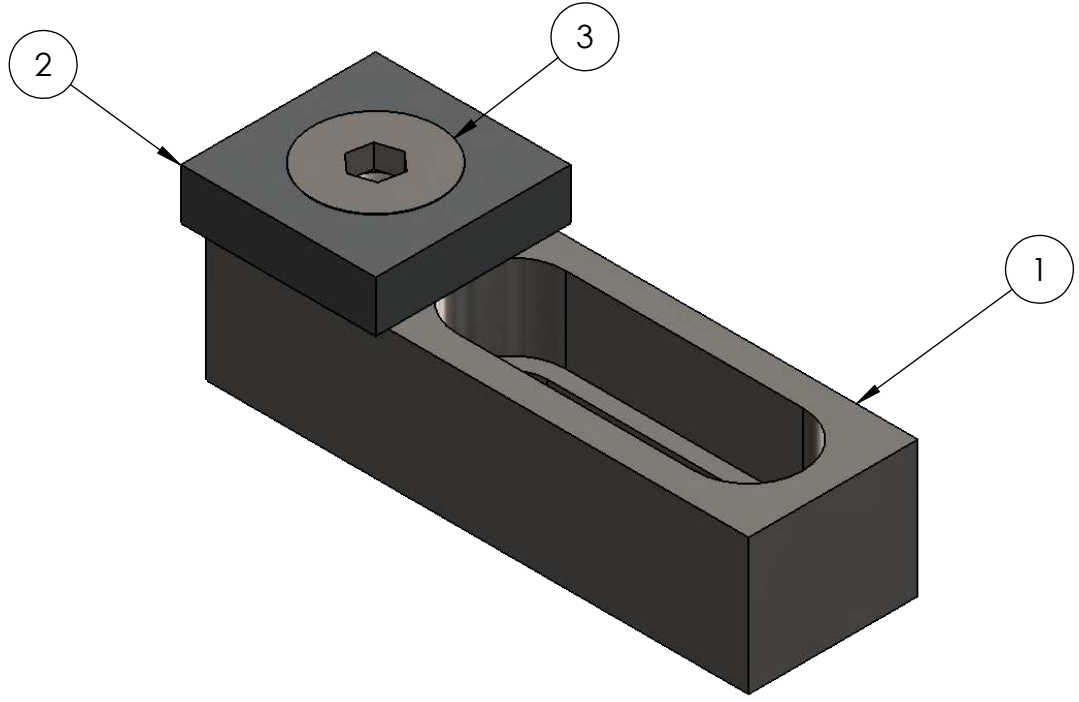
D

C

C

B

B



A

A

PROPRIETARY AND CONFIDENTIAL
 THE INFORMATION CONTAINED IN THIS
 DRAWING IS THE SOLE PROPERTY OF
 MAKEITFROMMETAL.COM. ANY NON-
 EDUCATIONAL
 REPRODUCTION IN PART OR AS A WHOLE
 WITHOUT THE WRITTEN PERMISSION OF
 MAKEITFROMMETAL.COM IS
 PROHIBITED.

UNLESS OTHERWISE SPECIFIED:
 DIMENSIONS ARE IN INCHES
 TOLERANCES:
 FRACTIONAL ±1/16
 ANGULAR: MACH ±0.5 BEND ±1
 TWO PLACE DECIMAL ±0.01"
 THREE PLACE DECIMAL ±0.005"

MATERIAL
 FINISH

TITLE: EDGE CLAMP			
SIZE A	DWG. NO. 001		
SCALE: 1:1	WEIGHT:	SHEET 1 OF 3	

4

3

2

1

4

3

2

1

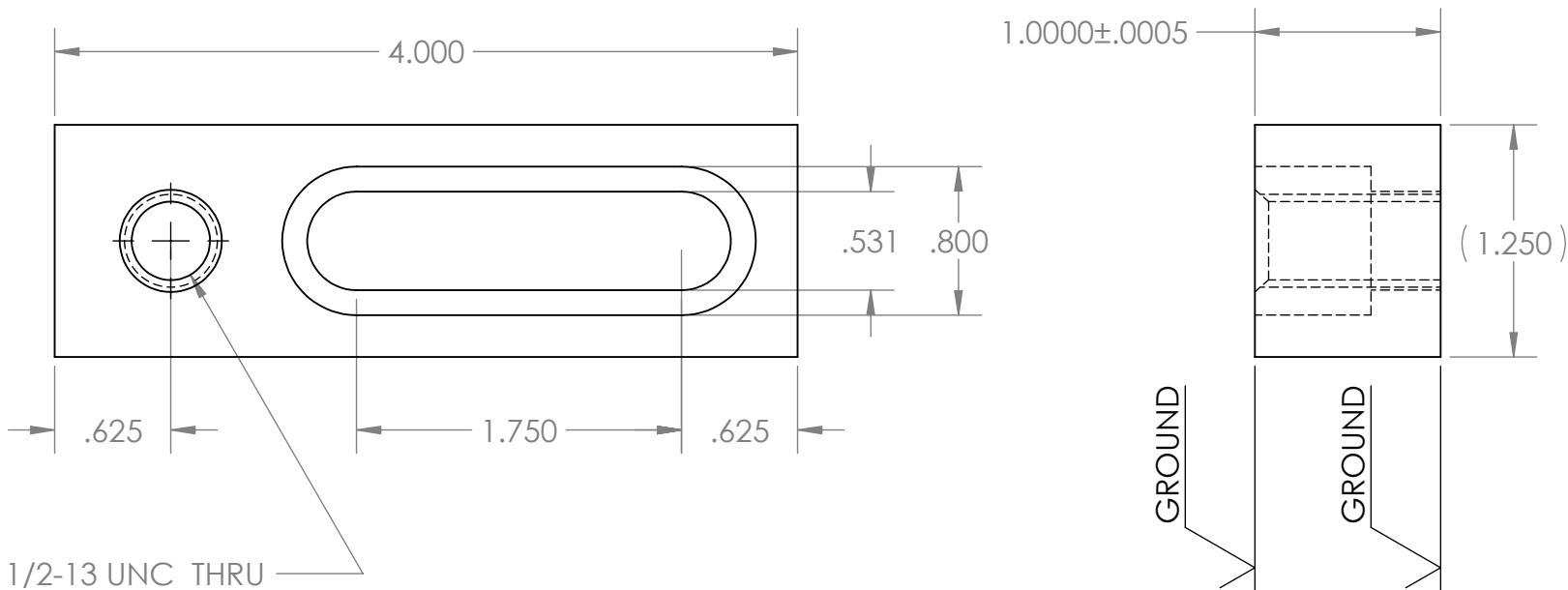
D

D

NOTE:
HEAT TREAT TO 54-56 HRC

C

C



B

B

A

A

PROPRIETARY AND CONFIDENTIAL
 THE INFORMATION CONTAINED IN THIS
 DRAWING IS THE SOLE PROPERTY OF
 MAKEITFROMMETAL.COM. ANY NON-
 EDUCATIONAL
 REPRODUCTION IN PART OR AS A WHOLE
 WITHOUT THE WRITTEN PERMISSION OF
 MAKEITFROMMETAL.COM IS
 PROHIBITED.

UNLESS OTHERWISE SPECIFIED:
 DIMENSIONS ARE IN INCHES
 TOLERANCES:
 FRACTIONAL ±1/16
 ANGULAR: MACH ±0.5 BEND ±1
 TWO PLACE DECIMAL ±0.01"
 THREE PLACE DECIMAL ±0.005"

MATERIAL	4140 STEEL
FINISH	AS MACHINED

TITLE:
**EDGE CLAMP
 BODY**

SIZE	DWG. NO.
A	002
SCALE: 1:1	WEIGHT:
	SHEET 2 OF 3

4

3

2

1

4

3

2

1

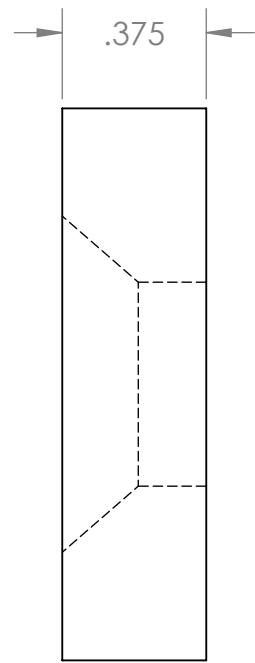
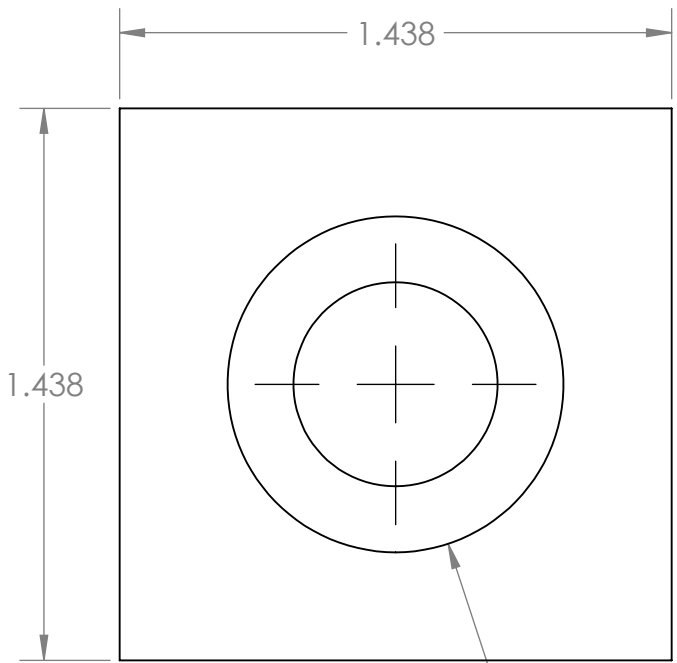
D

D

NOTE:
HEAT TREAT TO 54-56 HRC

C

C



B

B

ϕ .531 THRU
 \checkmark ϕ .875 X 82°
 CENTERED TO OUTSIDE EDGES

A

A

PROPRIETARY AND CONFIDENTIAL
 THE INFORMATION CONTAINED IN THIS
 DRAWING IS THE SOLE PROPERTY OF
 MAKEITFROMMETAL.COM. ANY NON-
 EDUCATIONAL
 REPRODUCTION IN PART OR AS A WHOLE
 WITHOUT THE WRITTEN PERMISSION OF
 MAKEITFROMMETAL.COM IS
 PROHIBITED.

UNLESS OTHERWISE SPECIFIED:
 DIMENSIONS ARE IN INCHES
 TOLERANCES:
 FRACTIONAL $\pm 1/16$
 ANGULAR: MACH ± 0.5 BEND ± 1
 TWO PLACE DECIMAL ± 0.01 "
 THREE PLACE DECIMAL ± 0.005 "

MATERIAL	4140 STEEL
FINISH	AS MACHINED

TITLE:		EDGE CLAMP JAW	
SIZE	DWG. NO.	003	
SCALE: 2:1		WEIGHT:	SHEET 3 OF 3

4

3

2

1